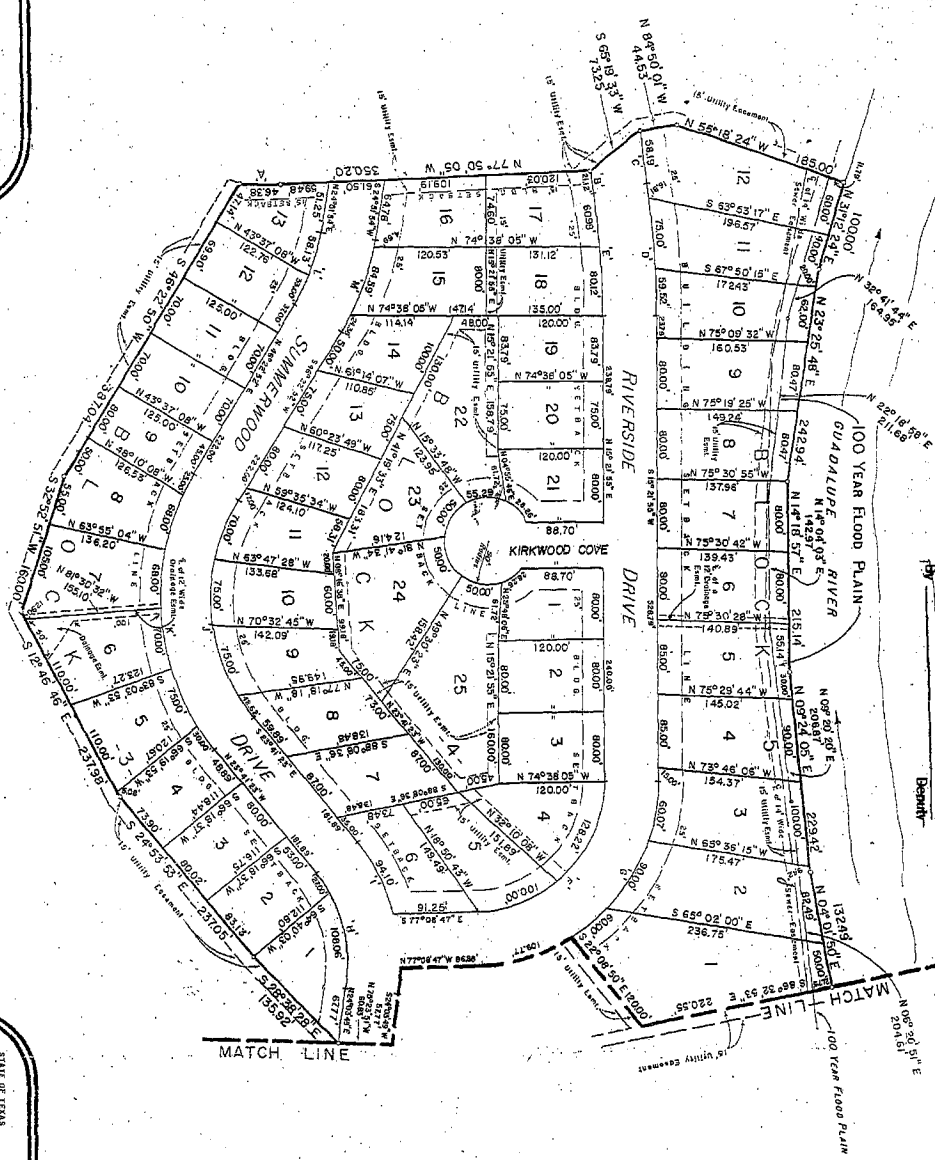


FILED FOR RECORD
 This 17 day of March 1988
 at 1:56 p.m.
 Clerk of Dallas County
 County Court, Comal County
 Texas

SCALE 1" = 100'



SUMMERWOOD SUBDIVISION
 UNIT-1

Being 22.300 Acres out of the Henry
 Foster Survey No. 34, Comal County,
 Texas.

CORRECTION PLAT

STATE OF TEXAS
 COUNTY OF COMAL
 THE RIGHT OF THE UNDERGROUND AUTHORITY ON THIS DAY PERSONALLY APPEARED
 BEFORE ME, THE UNDERSIGNED, A duly authorized agent acknowledged that this plat was
 made from an actual survey and executed to the use of the public for the use of
 streets, alleys, parks, water courses, ditches, easements and public places thereon
 shown for the purposes and considerations therein expressed. It is also
 shown for utilities, an aerial easement over feet on each side of all easements
 and streets and easements shown on the plat.

Edward S. Hollmig
 Surveyor

STATE OF TEXAS
 COUNTY OF COMAL
 BEFORE ME, THE UNDERSIGNED, A duly authorized agent acknowledged that this plat was
 made from an actual survey and executed to the use of the public for the use of
 streets, alleys, parks, water courses, ditches, easements and public places thereon
 shown for the purposes and considerations therein expressed. It is also
 shown for utilities, an aerial easement over feet on each side of all easements
 and streets and easements shown on the plat.

Michael J. Williams
 Notary Public, Comal County, Texas
 My commission expires August 10, 1988

THIS PLAT OF SUBDIVISION IS HEREBY
 FILED FOR RECORD IN THE PUBLIC
 RECORDS OF THE COUNTY OF COMAL,
 TEXAS AND IS HEREBY APPROVED FOR THE CITY OF NEW BRAUNFELS, TEXAS
 ON THIS 17th DAY OF MARCH 1988.

APPROVED:
Edward S. Hollmig
 Surveyor
 My commission expires August 10, 1988



STATE OF TEXAS
 COUNTY OF COMAL
 I HEREBY CERTIFY THAT THIS PLAT IS TRUE AND CORRECT AND WAS PREPARED FROM AN
 ACTUAL SURVEY OF THE PROPERTY MADE UNDER MY SUPERVISION ON THE 17th
 DAY OF MARCH 1988.



SMITH TO BE SUPERSEDED BY THE SURVEYOR
 S. CRAIG HOLLMIG, No. 41714
 My commission expires August 10, 1988
 Notary Public, Comal County, Texas



S. CRAIG HOLLMIG & ASSOC.
 engineers ~ surveyors
 new braunfels, texas

